



Societal Impact of Social Sciences,
Humanities & Arts Conference
2- 4 November, Stockholm

Parallel Session (K.13)

Inclusive engagement with the broader community

A decorative background at the top of the slide featuring a network diagram with red and black nodes connected by thin lines, set against a light red gradient.

Societal Impact of Social Sciences,
Humanities & Arts Conference
2- 4 November, Stockholm

Inclusive engagement with the broader community

Ursula Gobel

*Vice-President, Stakeholder Engagement and Advancement of Society,
Social Science & Humanities Research Council, Canada*



Social Sciences and Humanities
Research Council of Canada

Conseil de recherches en
sciences humaines du Canada

Canada

ENABLING EXCELLENCE, BUILDING PARTNERSHIPS, CONNECTING WITH COMMUNITIES

AEISIS - SOCIETAL IMPACT OF SOCIAL SCIENCES, HUMANITIES AND ARTS 2022

URSULA GOBEL, VICE-PRESIDENT, STAKEHOLDER ENGAGEMENT AND ADVANCEMENT OF SOCIETY

NOVEMBER 4, 2022

Social Sciences and Humanities Research Council of Canada (SSHRC)

Federal agency mandated to promote and support research and training in the social sciences and humanities

Through programs, collaborations and knowledge mobilization activities SSHRC:

- **Trains** the next generation of talented, creative thinkers and doers
- **Builds** knowledge and understanding about people, cultures and societies
- **Drives** the innovations that address the challenges of today and tomorrow



FUNDING OPPORTUNITIES

RESEARCH TRAINING AND TALENT DEVELOPMENT

Building the next generation of leaders and equipping them for research-intensive careers across the economy and society

- Master's Scholarships
- Doctoral Scholarships
- Postdoctoral Fellowships

INSIGHT RESEARCH

Fostering research-based knowledge about people

- Insight Development Grants
- Insight Grants
- Support to institutions

RESEARCH PARTNERSHIPS

Supporting the flow and exchange of that knowledge within and beyond academe.

- Connection Grants
- Support for Journals
- Knowledge Synthesis Grants

PARTNERSHIPS

Within the academic community and between academe, industry, government, not-for-profits and communities

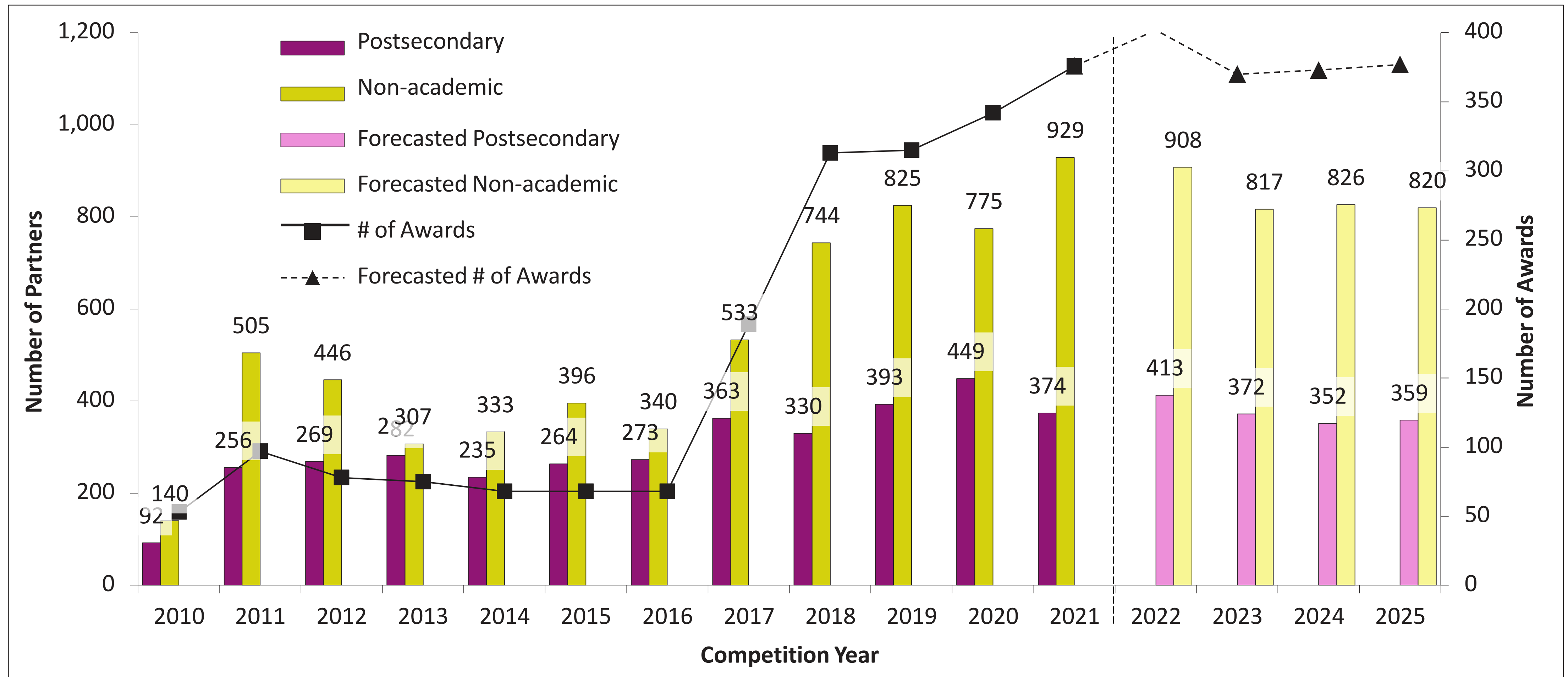
- ↳ Partnership Development Grants
- ↳ Partnership Grants
- ↳ Partnership Engage Grants

EVALUATION OF SSHRC PARTNERSHIP FUNDING OPPORTUNITIES 2018

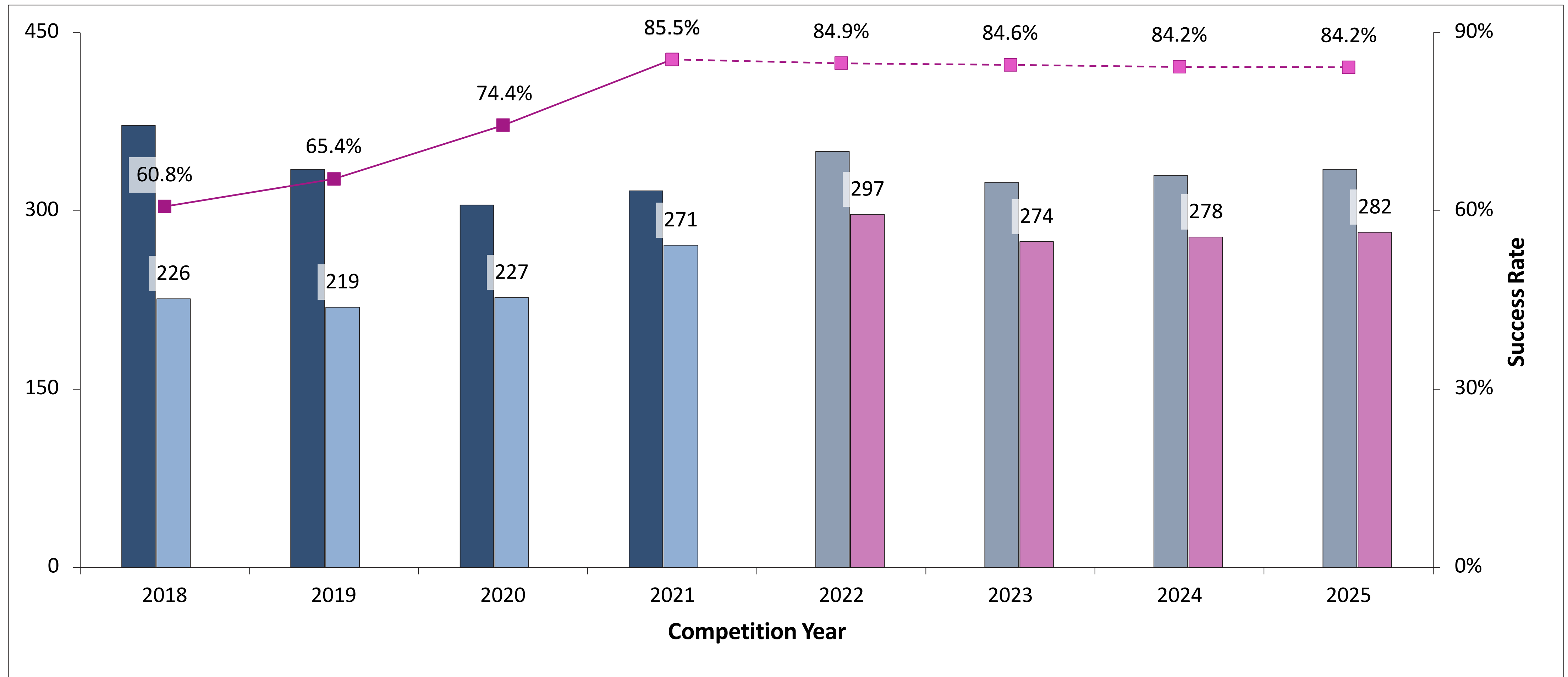
Genuine collaboration with non-academics is linked to positive outcomes



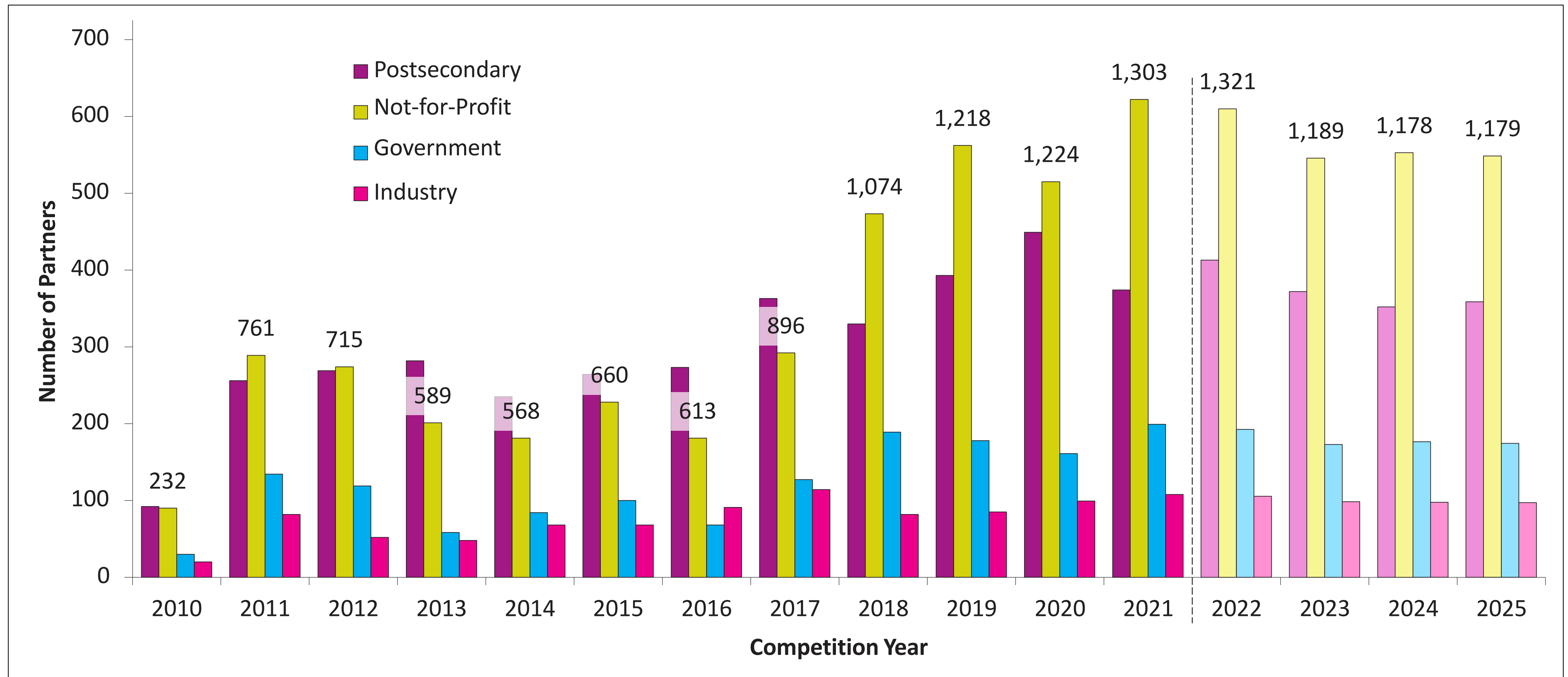
GROWING SUPPORT FOR FULL RANGE OF PARTNERSHIP GRANTS



INCREASED DEMAND AND SUPPORT FOR PARTNERSHIP ENGAGE GRANTS



PARTNERS BY SECTOR INDICATE STRONG ENGAGEMENT FROM COMMUNITIES AND NOT-FOR-PROFIT ORGANIZATIONS



Race Gender and Diversity Initiative

- launched in 2021 to support community-based and community-led research partnerships with postsecondary institutions that are grounded in the lived experience of underrepresented or disadvantaged groups and that analyze the causes and persistence of systemic racism and discrimination.
- Value and Duration: Up to \$450,000 over three years.
- 171 eligible applications were submitted and 46 projects were awarded amounting to a total investment of approximately \$19.3M.
- Applications were adjudicated by a diverse, multidisciplinary and multi-sectoral selection committee, representing academic, public, private and not-for-profit sectors with a diversity of research and lived experience.



Race Gender and Diversity Initiative

Examples of projects funded:

- Every Child Matters: Fostering Culture-Based Approaches Within Childhood Learning Spaces Across Urban Indigenous Communities—Magda Smolewski, Ontario Federation of Indigenous Friendship Centres
- Expérience des élèves noirs au préscolaire-primaire : comprendre les dynamiques de racisme et de constitution précoce des inégalités, et soutenir l'agentivité des acteurs en vue de les neutraliser—Gina Lafortune, Université du Québec à Montréal
- Anti-Indigenous Racism and Cultural Safety in Maternal and Child Healthcare for Inuit: Perspectives from Arviat, Nunavut—Zoua Vang, McGill University
- Alliance de recherche et d'action alternatives inclusives en santé mentale—Lourdès Rodriguez Del Barrio, Université de Montréal



STRENGTHENING INDIGENOUS RESEARCH CAPACITY

- *A priority of the Canada Research Coordinating Committee to advance reconciliation and help build Indigenous research capacity by working with Indigenous communities to develop and support new models for Indigenous research and research training*



Government
of Canada

Gouvernement
du Canada

Canada

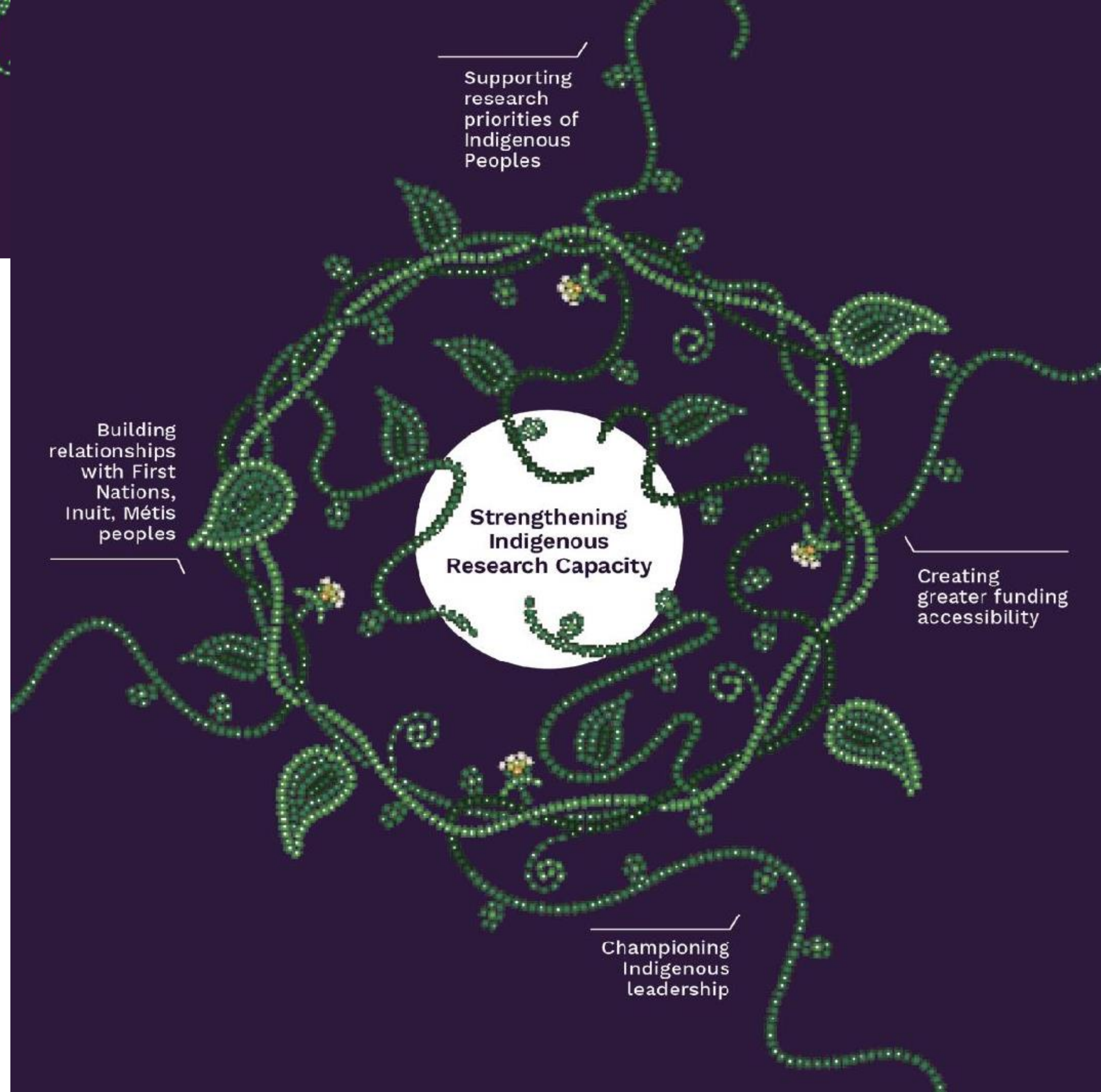
Strategic Directions and Guiding Principles

Self-determination: fostering the right for First Nations, Inuit and Métis peoples to set their own research priorities

Decolonization of research: respecting Indigenous ways of knowing and supporting community-led research

Accountability: strengthening accountability in respecting Indigenous ethics and protocols in research and identifying the benefits and impacts of research in Indigenous communities

Equitable access: facilitating and promoting equitable access and support for Indigenous students and researchers



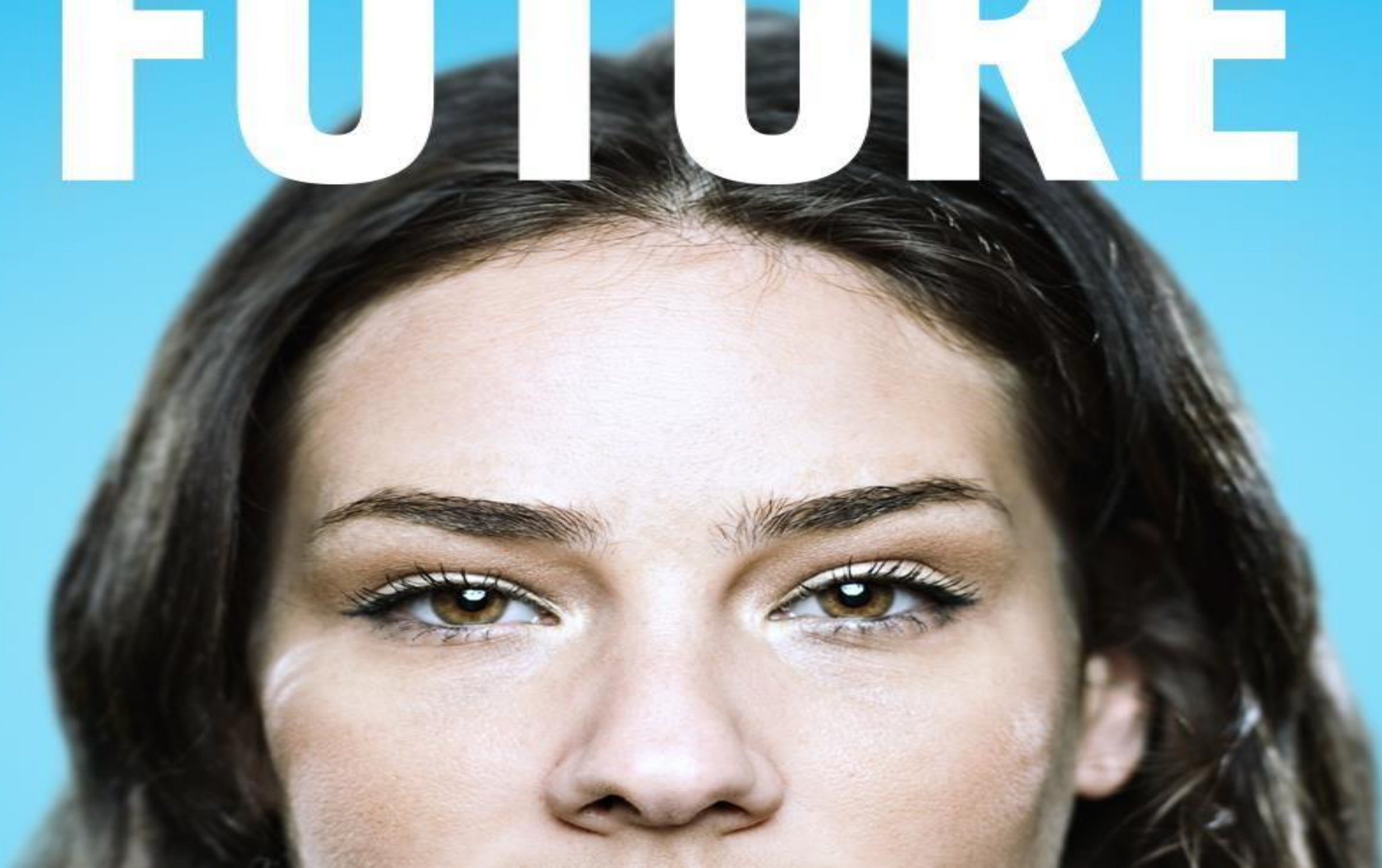


Social Sciences and Humanities
Research Council of Canada

Conseil de recherches en
sciences humaines du Canada

Canada

IMAGINING CANADA'S FUTURE



GOAL & OBJECTIVES

Through the [Imagining Canada's Future](#) (ICF) initiative, SSHRC mobilizes and leverages social sciences and humanities research, talent and expertise to address Canada's future, long-term societal challenges in a global context.

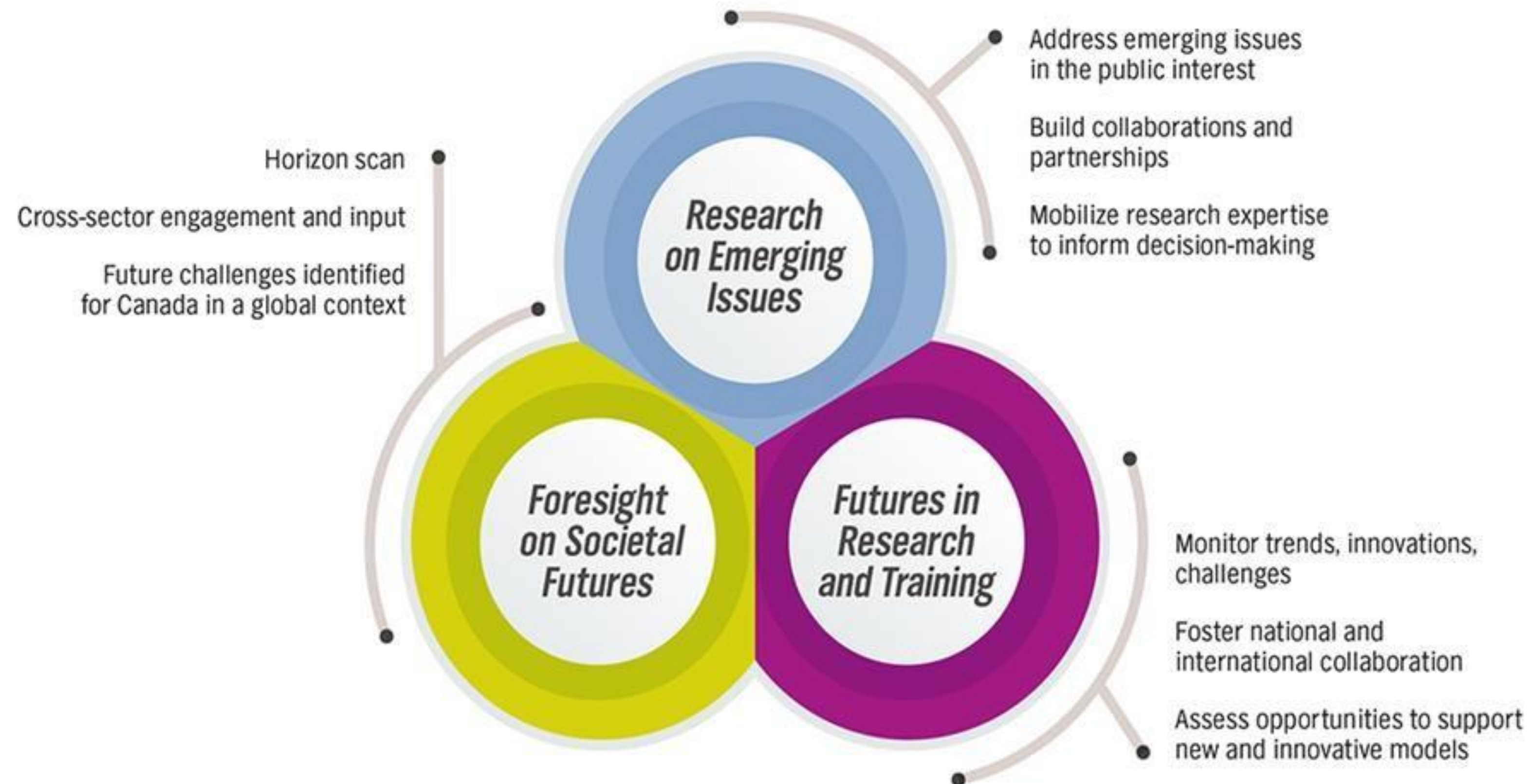
- ❖ Gain critical insights into the complexities of the challenge areas
- ❖ Identify research gaps and strengths
- ❖ Establish a robust evidence base for challenge areas
- ❖ **Inform decision-making in the public, private and not-for-profit sectors**
- ❖ **Build research capacity and communities of interest**
- ❖ **Facilitate collaboration and partnership with public, private and community sectors**

IMAGINING CANADA'S FUTURE FRAMEWORK



2018-2021

ASKING TOMORROW'S QUESTIONS TODAY



FUTURE CHALLENGES AREAS (2022-2025)



Environment

Living within Earth's
Carrying Capacity (2019)
The Pervasive Contamination of
the "Natural"



Economy

Working in the Digital Economy
(2020)

Global Health & Wellness



Technology

Humanity+
The Evolving Bio-Age
Balancing Risks & Benefits in the
Emerging Surveillance Society



Society

The Emerging Asocial Society (2021)

**Shifting Dynamics of Privilege and
Marginalization**

Building Better Lives Across the Gender Spectrum
Inhabiting Challenging Environments

Governance

Envisioning Governance Systems that Work

The Challenging Nature of Security and
Conflict



Art and Culture

Truth Under Fire in a Post-Fact World
The Arts Transformed

Evolving Narratives of Histories and Cultures

Knowledge shapes policy

Read the evidence briefs linked to Knowledge Synthesis Grants on the themes of:

- Mobility and Public Transit
- Skills and Work in the Digital Economy
- Living Within the Earth's Carrying Capacity

www.sshrc-crsh.gc.ca/evidencebriefs



Social Sciences and Humanities
Research Council of Canada

Conseil de recherches en
sciences humaines du Canada

Canada



STAY CONNECTED WITH SSHRC

- ↘ Visit our website: www.sshrc-crsh.gc.ca
- ↘ Subscribe to our eNewsletter: **Dialogue**
- ↘ Follow @SSHRC and @TIPS_SPIIE



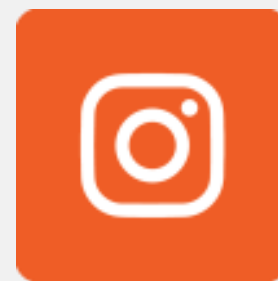
@SSHRC_CRSH



FACEBOOK



YOUTUBE



@SSHRC_CRSH



LINKEDIN



THANK YOU / MERCI!

URSULA GOBEL

URSULA.GOBEL@SSHRC-CRSH.GC.CA



Social Sciences and Humanities
Research Council of Canada

Conseil de recherches en
sciences humaines du Canada

Canada

A network diagram with red and black nodes and connecting lines, set against a light background.

Societal Impact of Social Sciences,
Humanities & Arts Conference
2- 4 November, Stockholm

Inclusive engagement with the broader community

Michael Jacobson

*Director, Office of Strategic Research Initiative, Division of Research, Binghamton
Univeristy, USA*

Inclusive Engagement at Sites of Conflict

Michael Jacobson, PhD

Binghamton University

AESIS- Societal Impact of Social Sciences, Humanities, and Arts

November 4, 2022

Preservation50

1966-2016

Preservation50

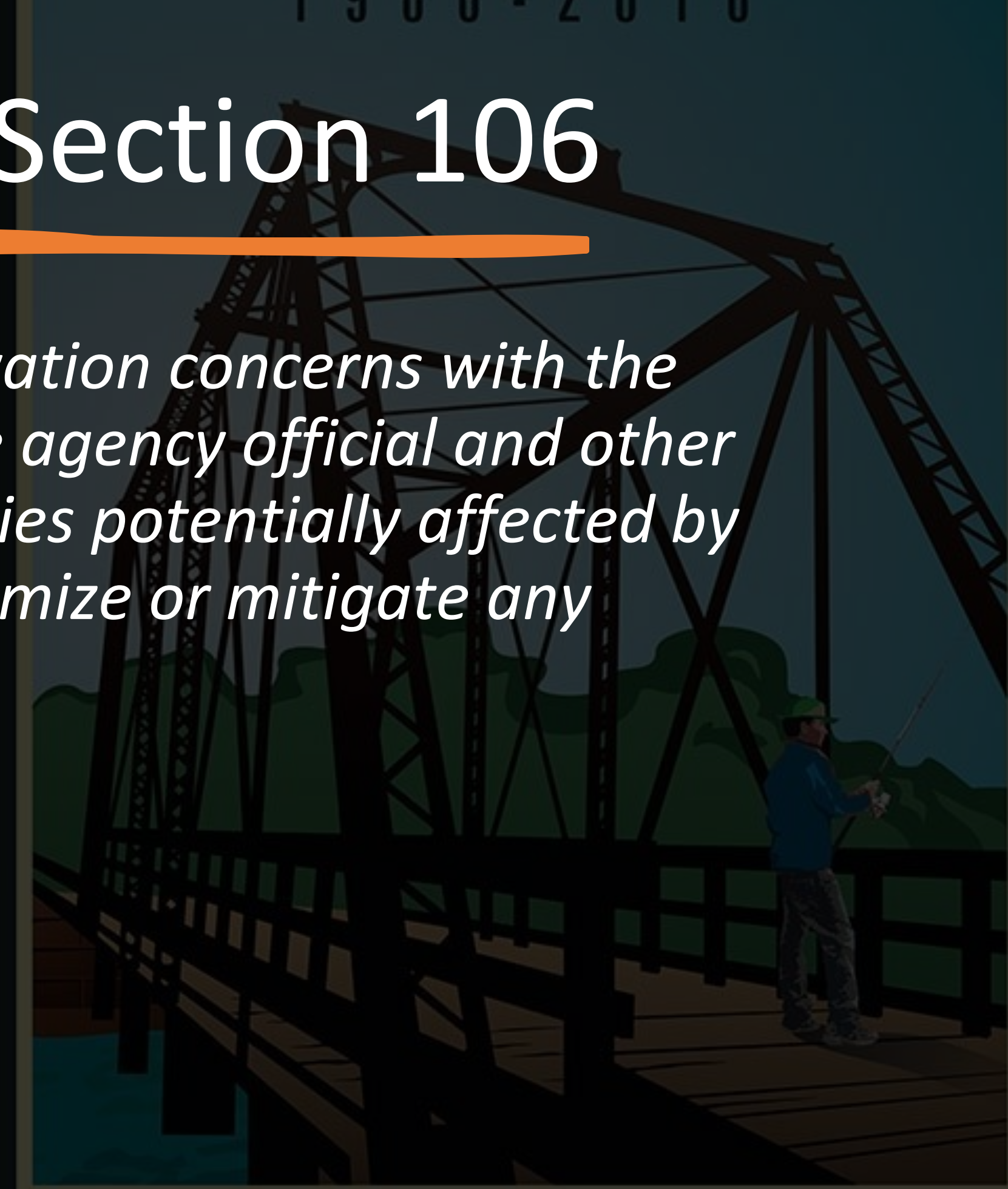
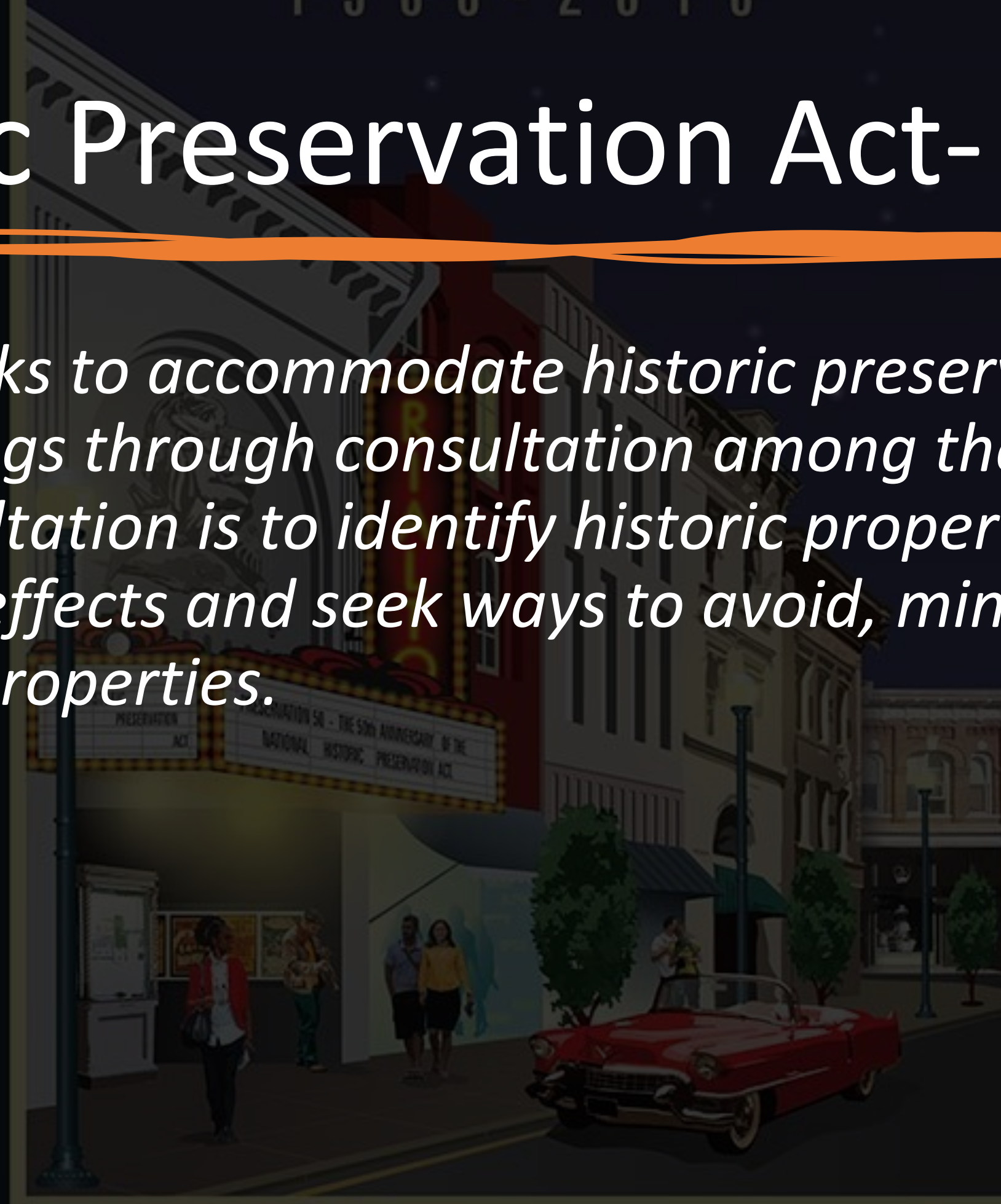
1966-2016

Preservation50

1966-2016

National Historic Preservation Act- Section 106

The section 106 process seeks to accommodate historic preservation concerns with the needs of Federal undertakings through consultation among the agency official and other parties ... The goal of consultation is to identify historic properties potentially affected by the undertaking, assess its effects and seek ways to avoid, minimize or mitigate any adverse effects on historic properties.



OUR LEGACY, OUR FUTURE OUR LEGACY, OUR FUTURE OUR LEGACY, OUR FUTURE

Three Examples

- What is the role of conflict and memory?
- Whose story is it?
 - Researcher, descendant community, interested communities
 - Addressing inequities from the past and in the present
 - Role of ownership and access
- What is the outcome and how do we measure impact?



Fort Anne Battlefield

- Fort Ann, New York, United States
 - American Revolution battle July 7-8, 1777
 - Part of British General John Burgoyne's Saratoga Campaign
 - American victory that was pivotal in stopping the British campaign
-



Fieldwork and Mediation

- Battle Hill threatened by potential granite and topsoil mine
 - Local American Legion Post led preservation effort
 - Archaeology testing with specific methods decided the path of preservation
-



Outcome

- Preservation of Battle Hill
- Plans for a local park
 - Increased tourism



American Battlefield PROTECTION PROGRAM
National Park Service 
"Working Together To Preserve America's Historic Battlefields"



Ludlow Massacre

- Ludlow, Colorado, United States
 - September 1913- Coal miners and families join United Mine Workers strike
 - Ludlow Strikers' Colony
 - 200 tents and 1,200 strikers and families
 - April 20, 1914- Ludlow Massacre
-



Courtesy of the Denver Public Library



Courtesy of the Denver Public Library

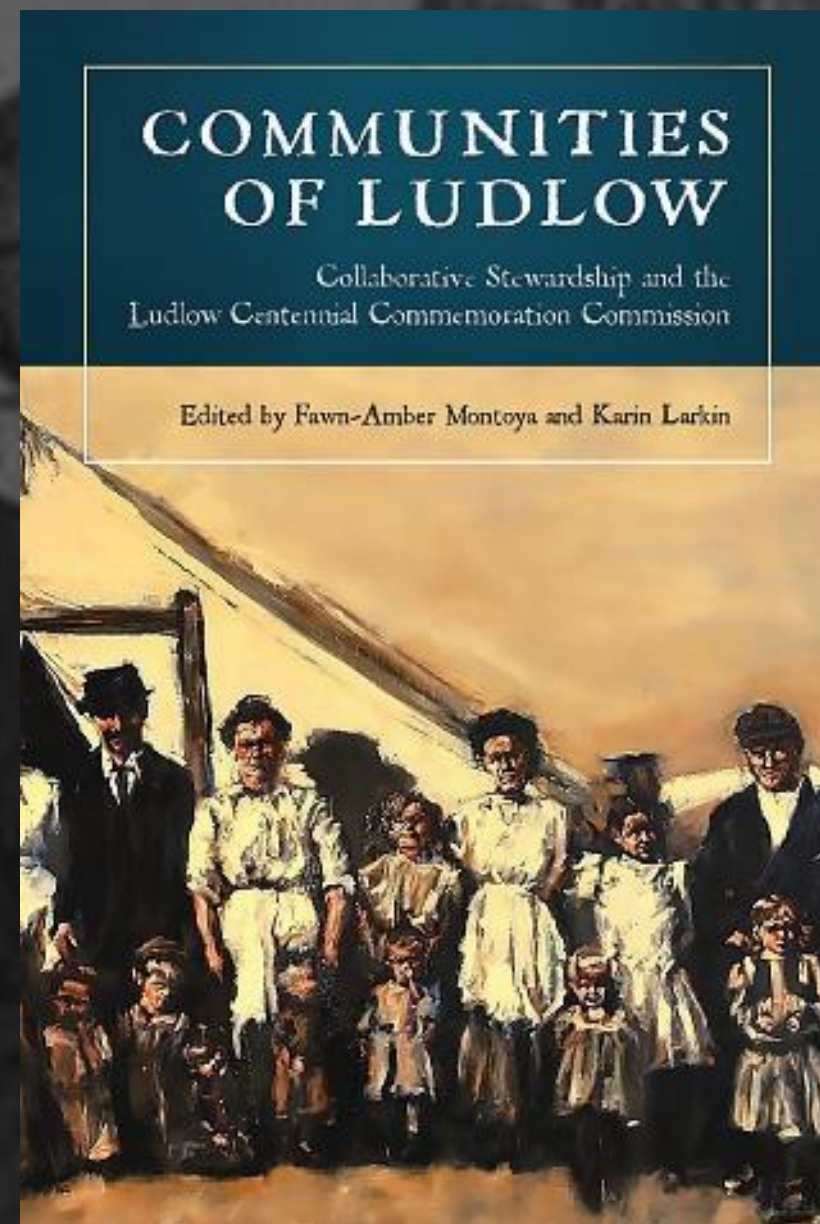
Engagement- The Ludlow Collective

- Archaeological field research as outreach
 - Dissemination of Research
 - Co-publication with the descendant community
 - Teaching Institute
 - Traveling exhibit
 - Collaboration with present-day unions
 - Speeches and exhibits for the annual memorial service
 - Joining solidarity dinners
 - Commemoration of the centennial
 - Story Map- <https://arcg.is/18yCKD>
-



Outcome

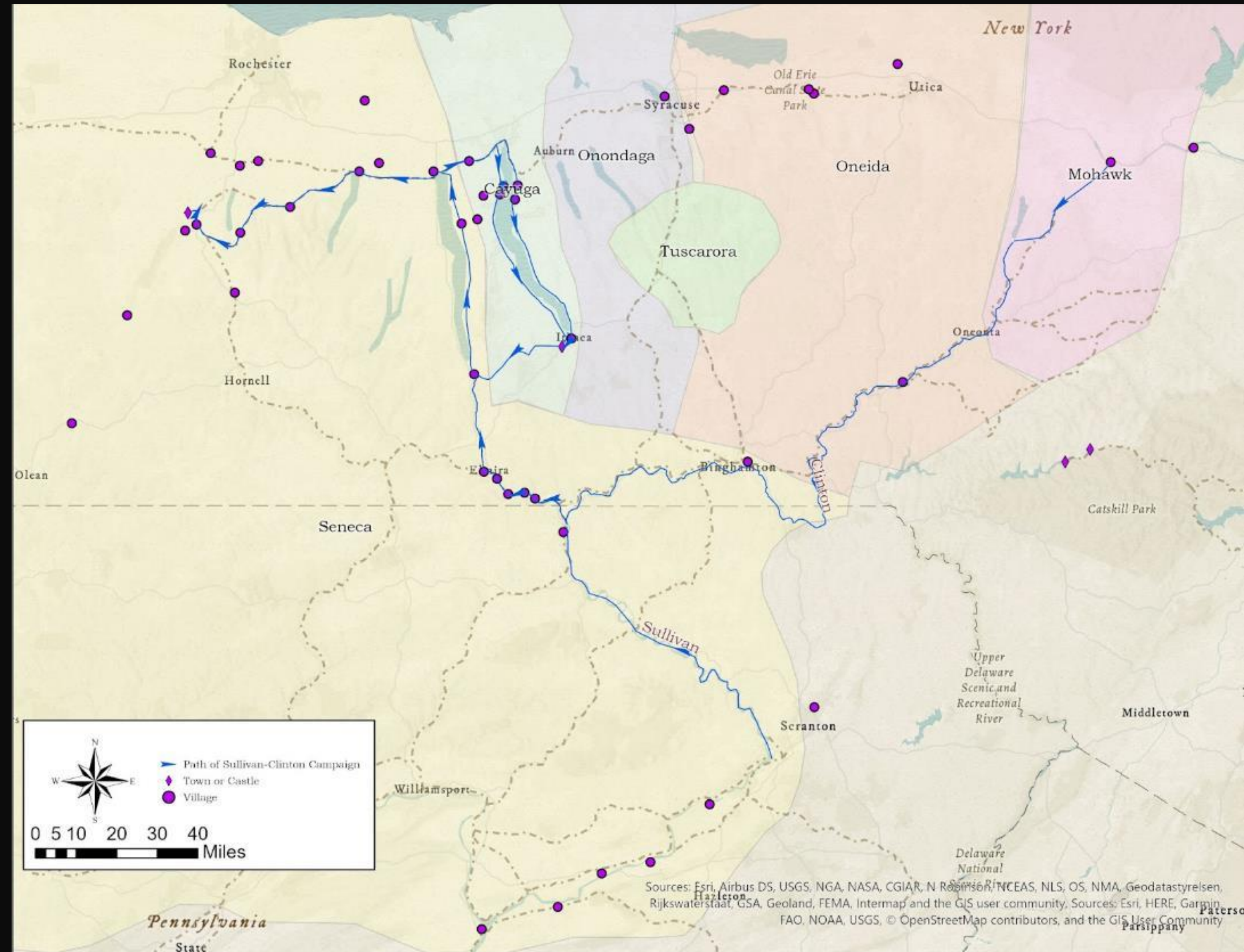
- Named a National Historic Landmark in 2009
- New interpretative signage
- Continued part of the national discussion on labor in the United States
- Part of the Colorado education curriculum
- Continued preservation and commemoration



Courtesy of the Karin Larkin

The Sullivan-Clinton Campaign Or The Great Whirlwind

- American Revolution- June-September 1779
- General George Washington's Campaign against British allied Iroquois or Haudenosaunee
- Continental Army destroyed ~40 Haudenosaunee villages

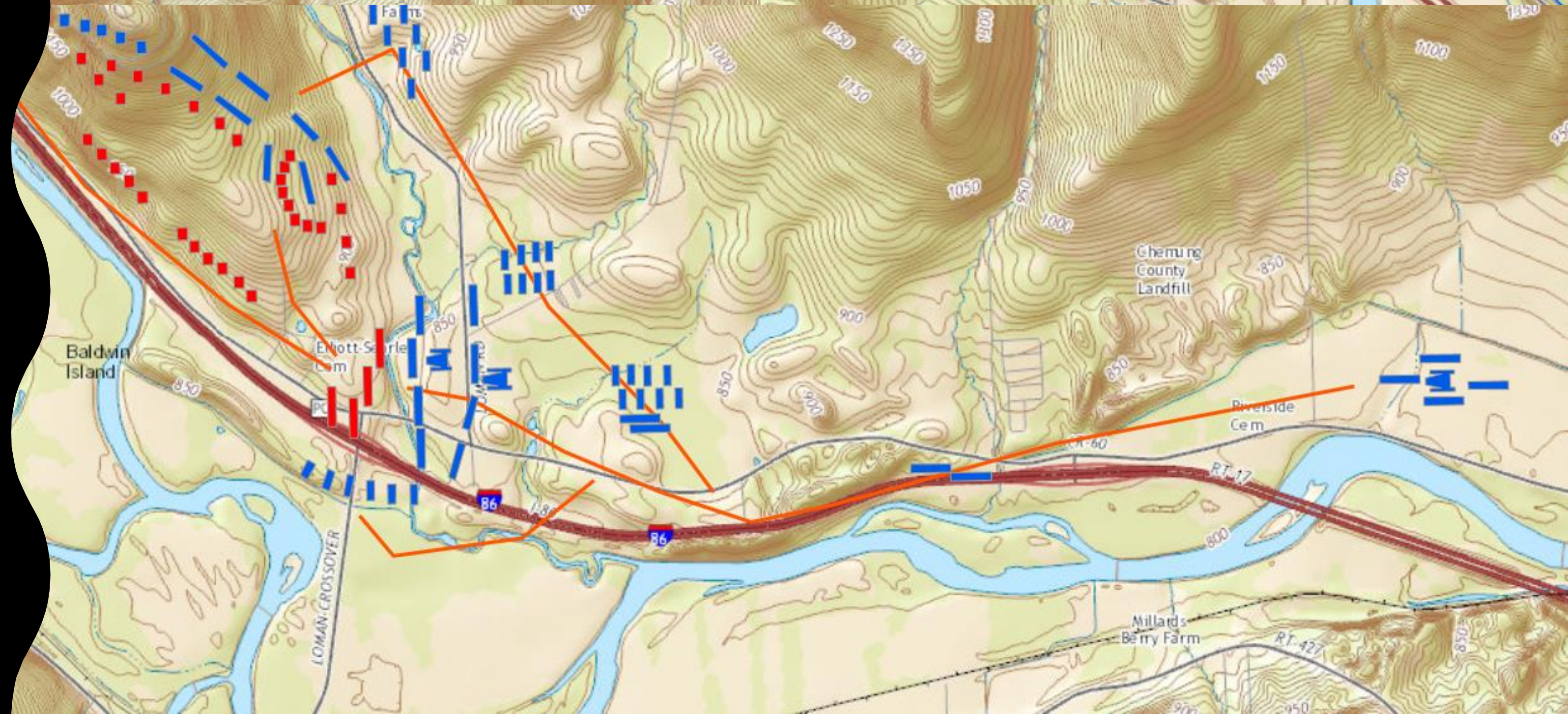


Newtown and Chemung

Battle of Chemung-
August 13, 1779



Battle of Newtown-
August 29, 1779





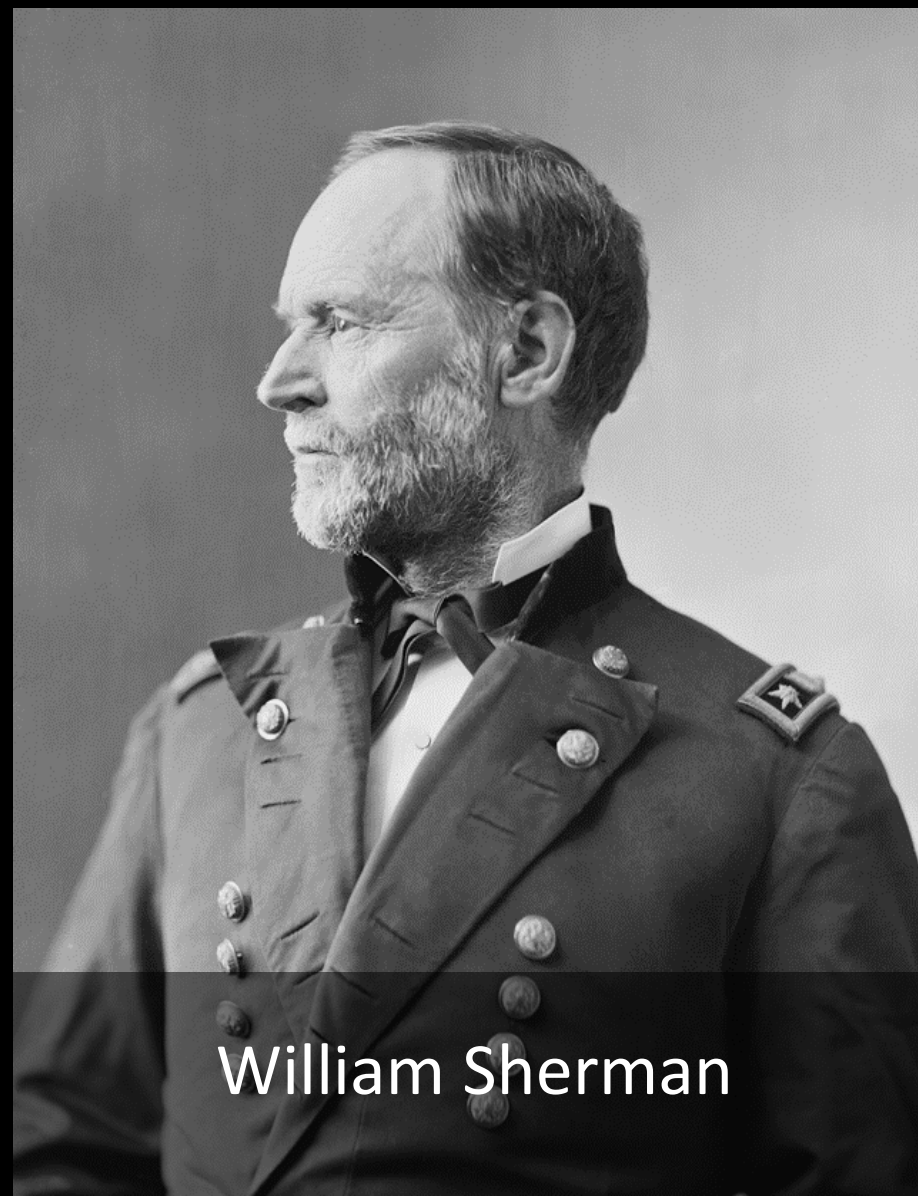
George Clinton



Cornplanter
(Gaiant'wake)



John Jay



William Sherman



Newtown and Chemung- Engagement

- Co-research and publication with Native American scholars
- Meetings with landowners and Native American descendants
- New memorials- signs



LEGEND

- ROUTES OF GENERALS SULLIVAN AND CLINTON
- ROUTES OF COLONELS BRODHEAD AND VAN SCHAICK AND DETACHMENTS OF SULLIVAN'S ARMY
- ~~~~~ ASSEMBLING AND DISPERSING OF TROOPS
- - - - ABANDONED PLAN OF CAMPAIGN

ROUTES OF THE ARMIES
 GENERAL JOHN SULLIVAN
 AND
 GENERAL JAMES CLINTON
 1779

AN EXPEDITION AGAINST THE HOSTILE
 NATIONS WHICH CHECKED THE AGGRES
 THE ENGLISH AND INDIANS

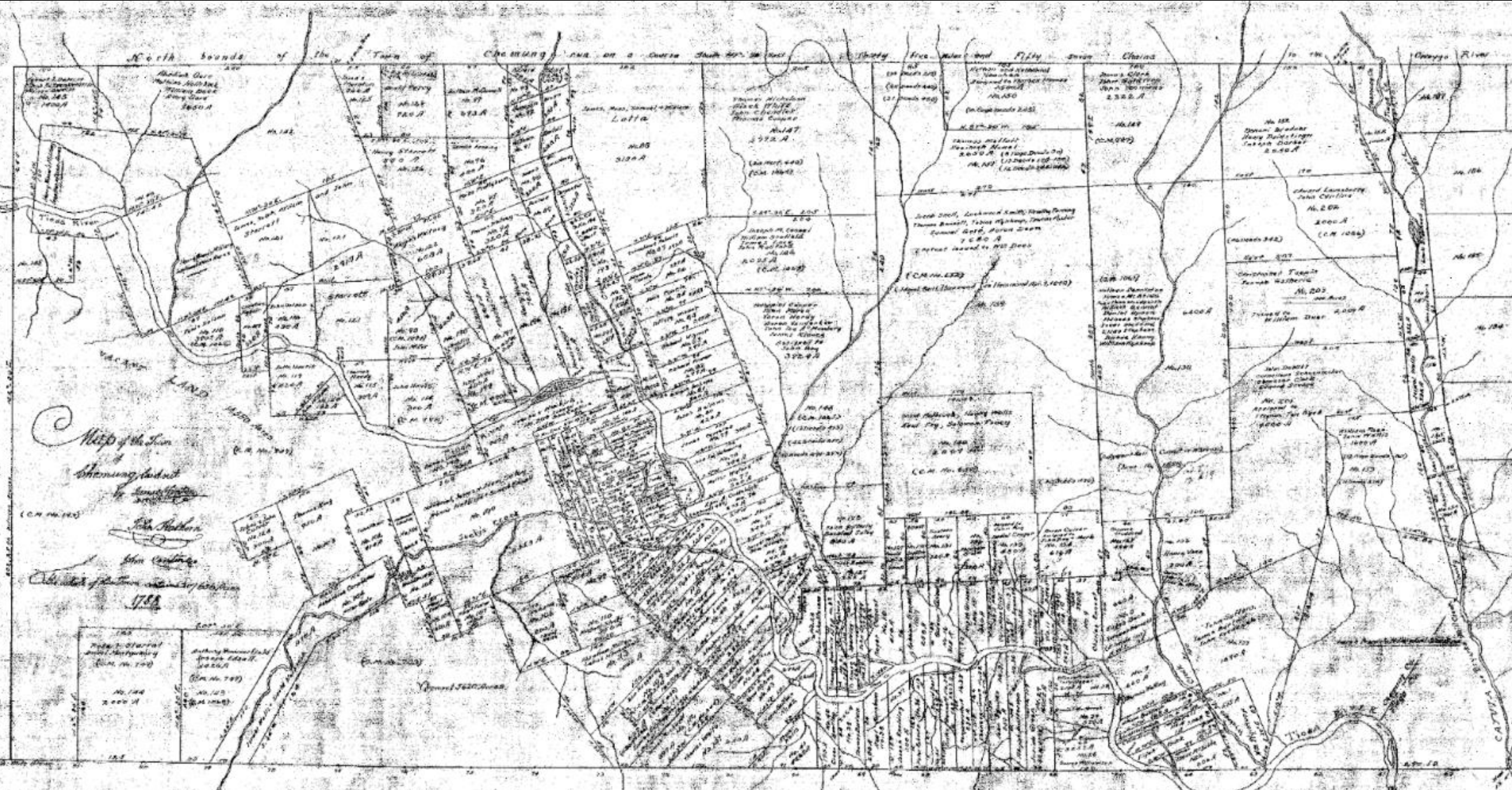


Case Map No. 999

The land containing descriptions of Great Lots in Old Town of Chemung filed in the Chemung County Clerk's Office.

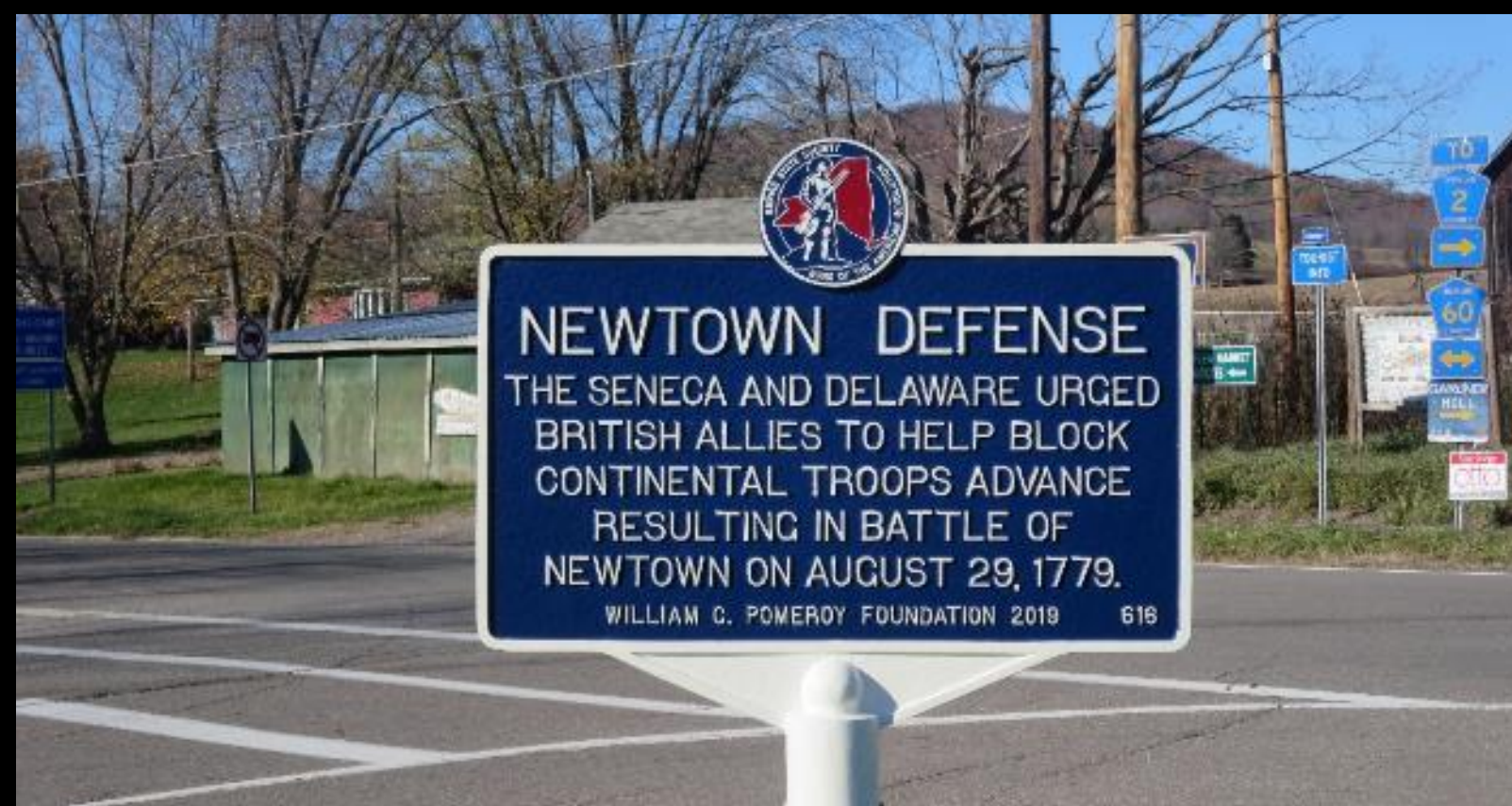
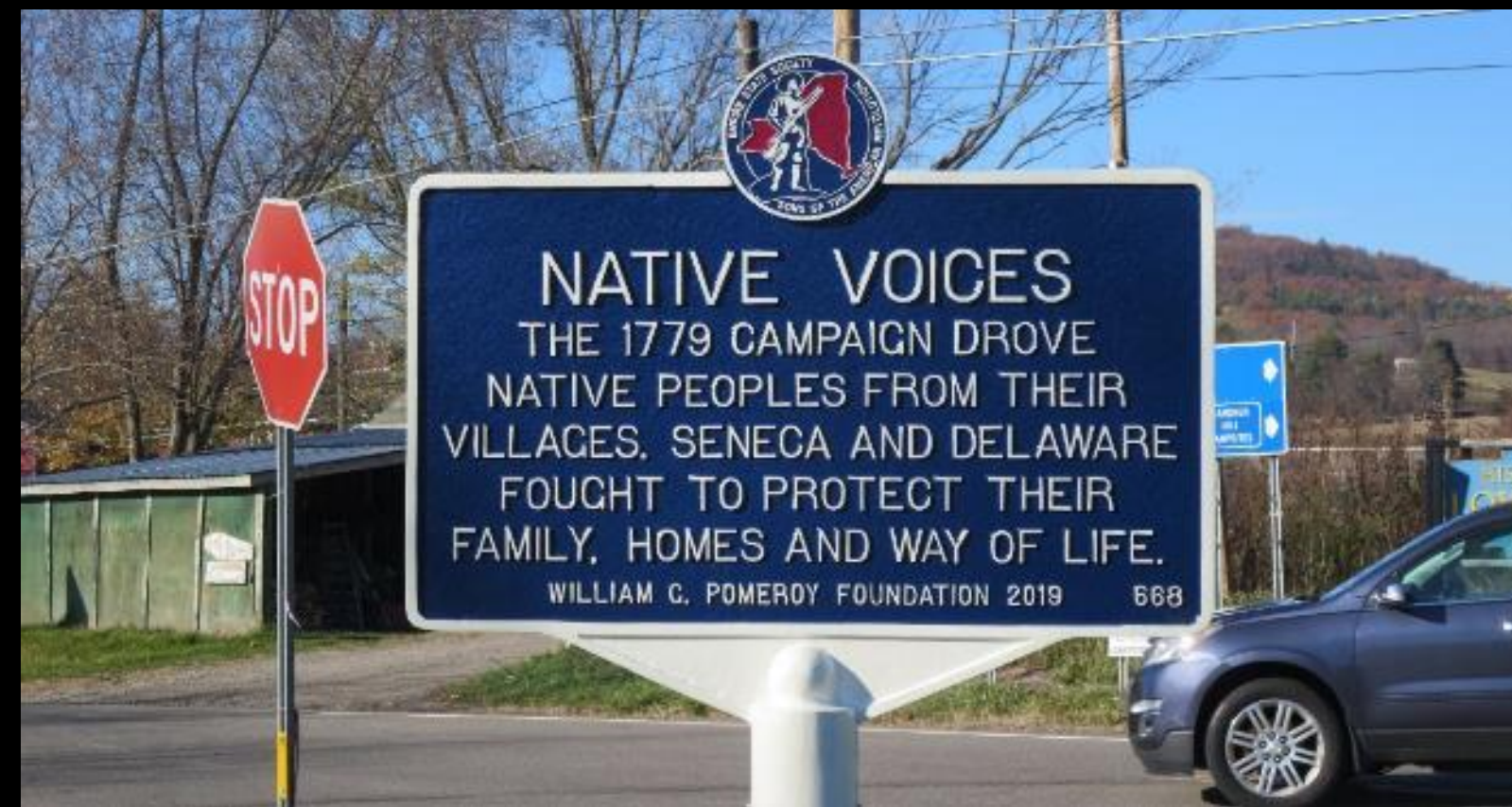
lands ceded to the Commonwealth of Massachusetts.

Notice is hereby given that this is a copy made for the use of the State Capitol, Albany, New York, from the original map filed in the Chemung County Clerk's Office, Case No. 999, on the 15th day of June, 1854, and that the same is a true and correct copy of the original map as the same appears on file in the Chemung County Clerk's Office.



Map of the Town of Chemung and of the lands ceded to the Commonwealth of Massachusetts.

PENNSYLVANIA LINE



New signs- New perspectives

Measuring Engagement

- Contextual
- Material outcomes- quantifiable
 - Lands preserved
 - Interpretive signs
 - Public engagement numbers
 - Regional Economic Impact
- Intangible- qualitative
 - Community partnerships
 - Memory
 - Public discourse





Acknowledgements

- Raymond W. Harvey Post American Legion
- NPS American Battlefield Protection Program
- American Battlefield Trust
- United Mine Workers of America
- Colorado Historical Society
- Residents for the Preservation of Lowman and Chemung
- Native American historians and consulting parties

A network diagram with red and black nodes and lines, representing a complex system or community.

Societal Impact of Social Sciences,
Humanities & Arts Conference
2- 4 November, Stockholm

Inclusive engagement with the broader community

Nicky Buckley

*Fellow, Knowledge Exchange Unit, Parliamentary Office of Science and Technology,
UK Parliament*

Inclusive engagement with the broader community

Nicky Buckley, Associate Director

Centre for Science and Policy, University of Cambridge

& Parliamentary Academic Fellow, Knowledge Exchange Unit, UK Parliament

Definitions of academic community engagement

- “The purpose of community engagement is the partnership of college and university knowledge and resources with those of the public and private sectors to enrich scholarship, research and creative activity; enhance curriculum, teaching, and learning; prepare educated, engaged citizens; strengthen democratic values and civic responsibility; address critical societal issues, and contribute to the public good.”
- In reciprocal partnerships, there are collaborative community-campus definitions of problems, solutions, and measures of success. Community engagement requires processes in which academics recognize, respect, and value the knowledge, perspectives, and resources of community partners and that are designed to serve a public purpose, building the capacity individuals, groups, and organizations involved to understand and collaboratively address issues of public concern

Knowledge mobiliser perspective

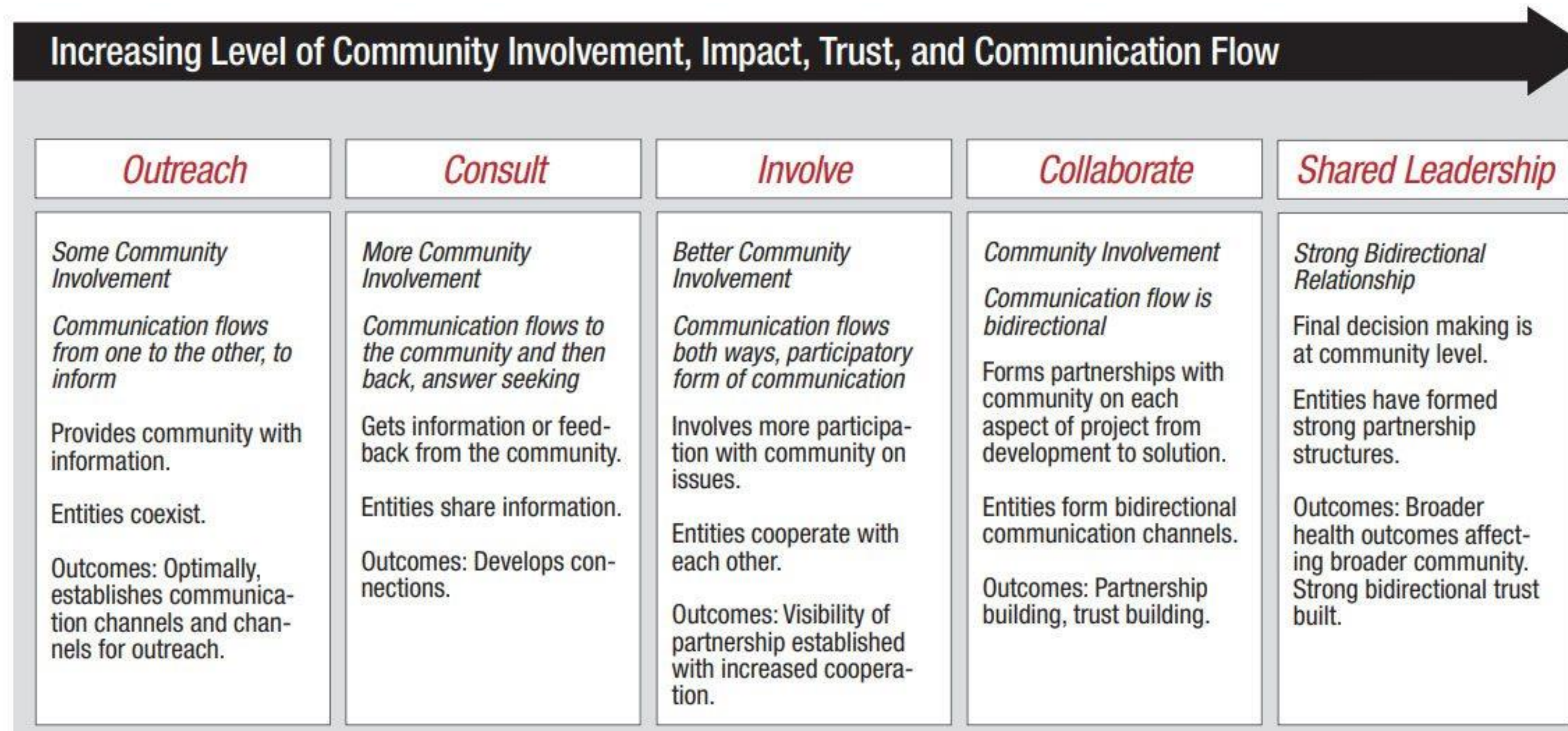
- Beginning from place of privilege, University of Cambridge
- Global interests of researchers, where does societal/community involvement fit in?
- Civic/social responsibility as an institutional commitment?
- 14 universities in the UK have published Civic University Agreements
- Can we agree vision, mission, values for university community engagement?



Suggested values for community engagement in research

- Investigators and communities understand what community engagement in research means
- The community–investigator partnership is strong
- Communities and investigators share power and responsibility equitably
- Diverse perspectives and populations are included in an equitable manner
- The research goals are clear and relevant
- The research project results in mutual benefit for all partners
- Communities and investigators have opportunities to build capacity
- All partners receive equal respect
- The monitoring and evaluating process is transparent
- The partners establish appropriate policies regarding ownership and dissemination of results
- The partners translate the research findings into policies, interventions, or programs
- The partners sustain the relationship and the research outcomes after the project ends

Spectrum of inclusive community engagement

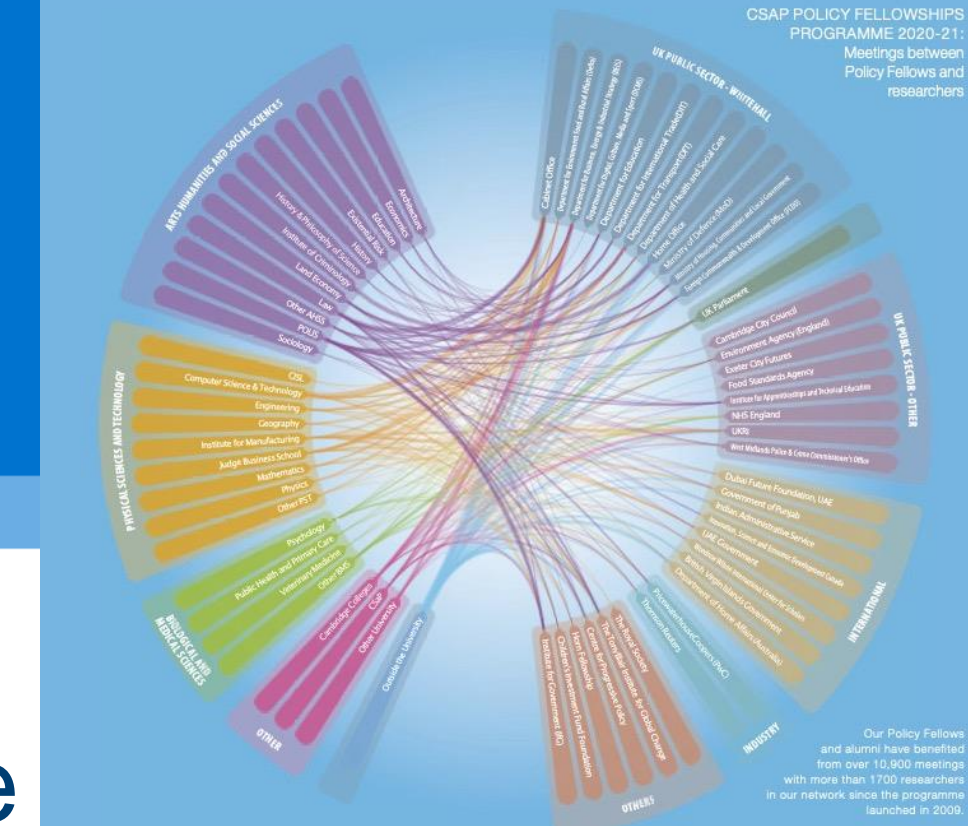


Cambridge Community Knowledge Exchange

- Inspired by science shops and the Living Knowledge network
- Taking questions from local civil society organisations and matching them with student dissertations (undergraduate, Masters)
- Worked with Women's Aid who enabled two undergraduate students to carry out research with women at the centre. One continued to a PhD in this area and then a policy job role



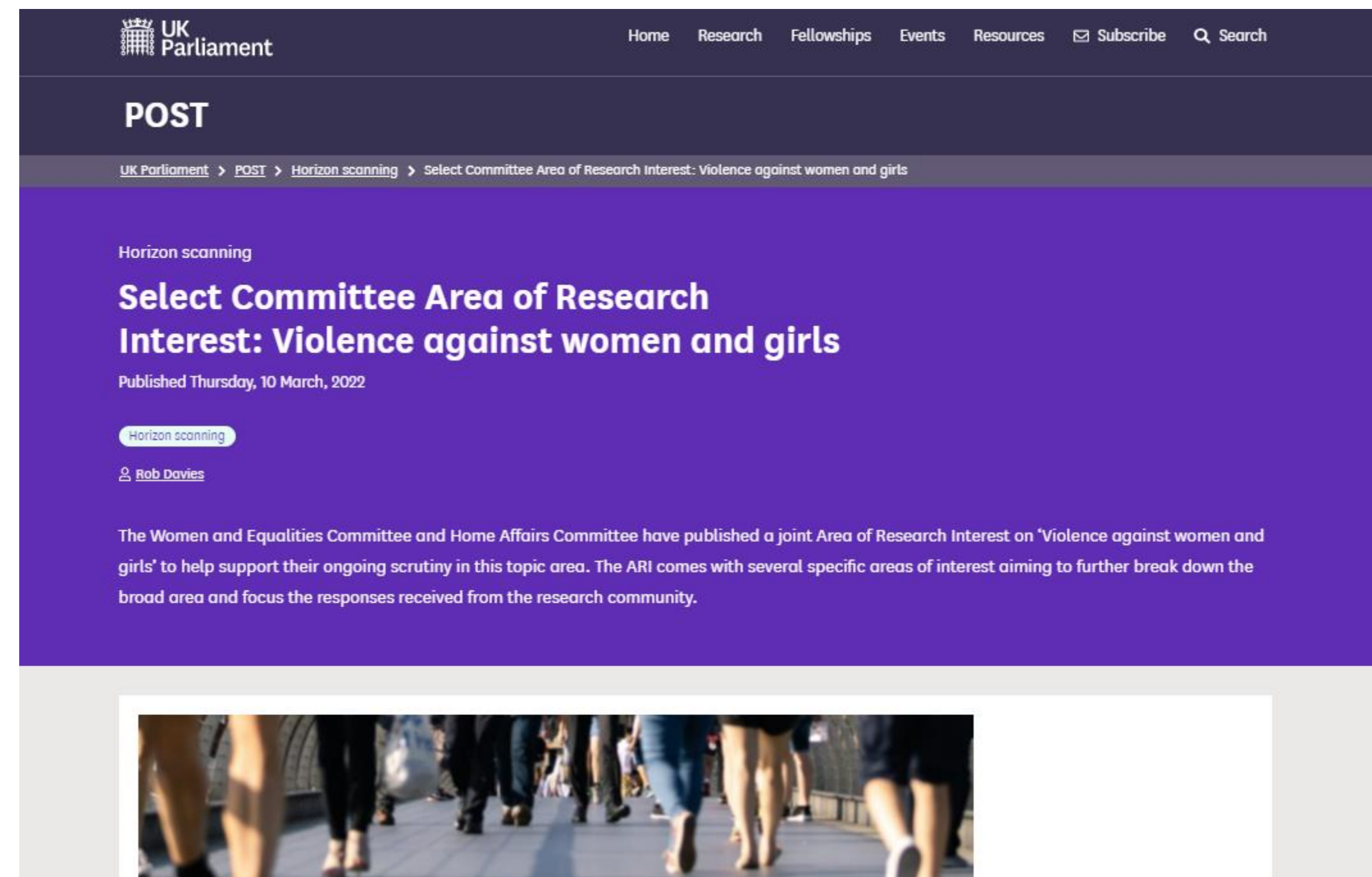
Now at Centre for Science and Policy



- We have some civil society organisations among those employing the Policy Fellows we select
- We are exploring what a community-based approach to developing evidence-informed policy would be like
- Eg Power to Change collaboration with Bennett Institute for Public Policy exploring public perceptions of what constitutes ‘social infrastructure’
- CAPE (Capabilities in Academic Policy Engagement) project has a Collaborative Fund, one example we are funding is evaluating modular housing for homeless, with Jimmy’s in Cambridge

Violence against women and girls topic

- Currently on secondment to Knowledge Exchange Unit, UK Parliament
- Helping Women and Equalities Committee with their academic, and community involvement on the overarching topic



The screenshot shows a webpage from the UK Parliament's POST (Parliamentary Office of Science and Technology) section. The page is titled "POST" and features a navigation menu with links for Home, Research, Fellowships, Events, Resources, Subscribe, and Search. The main content area is purple and contains the following text:

UK Parliament > POST > Horizon scanning > Select Committee Area of Research Interest: Violence against women and girls

Horizon scanning

Select Committee Area of Research Interest: Violence against women and girls

Published Thursday, 10 March, 2022

Horizon scanning

Rob Davies

The Women and Equalities Committee and Home Affairs Committee have published a joint Area of Research Interest on 'Violence against women and girls' to help support their ongoing scrutiny in this topic area. The ARI comes with several specific areas of interest aiming to further break down the broad area and focus the responses received from the research community.

Below the text is a photograph showing the lower legs and feet of a group of people walking on a paved surface, likely a public square or a busy street.

Infrastructure for community engagement

- Institutional cultivation and maintenance of relationships
- Research funder policies
- Government policy for universities
- Universities' own policies and practices and 'benchmarking' these. UK has Knowledge Exchange Framework and NCCPE Engage Watermark
- Career considerations for academics and knowledge mobilisers involved in community engagement
- Involvement mechanisms for community organisations to influence change in academic institutions and lead/co-lead research and knowledge exchange

Contact

- Nicky Buckley, Associate Director, Centre for Science and Policy, University of Cambridge
njb1010@cam.ac.uk
- @CSciPol
- @UKParl_Research

Inclusive engagement with the broader community

Panel discussion and Q&A

Ursula Gobel (Chair)

Michael Jacobson

Nicky Buckley